

FOR LEASE

New London Shopping Center

295 NEWPORT ROAD, NEW LONDON, NEW HAMPSHIRE

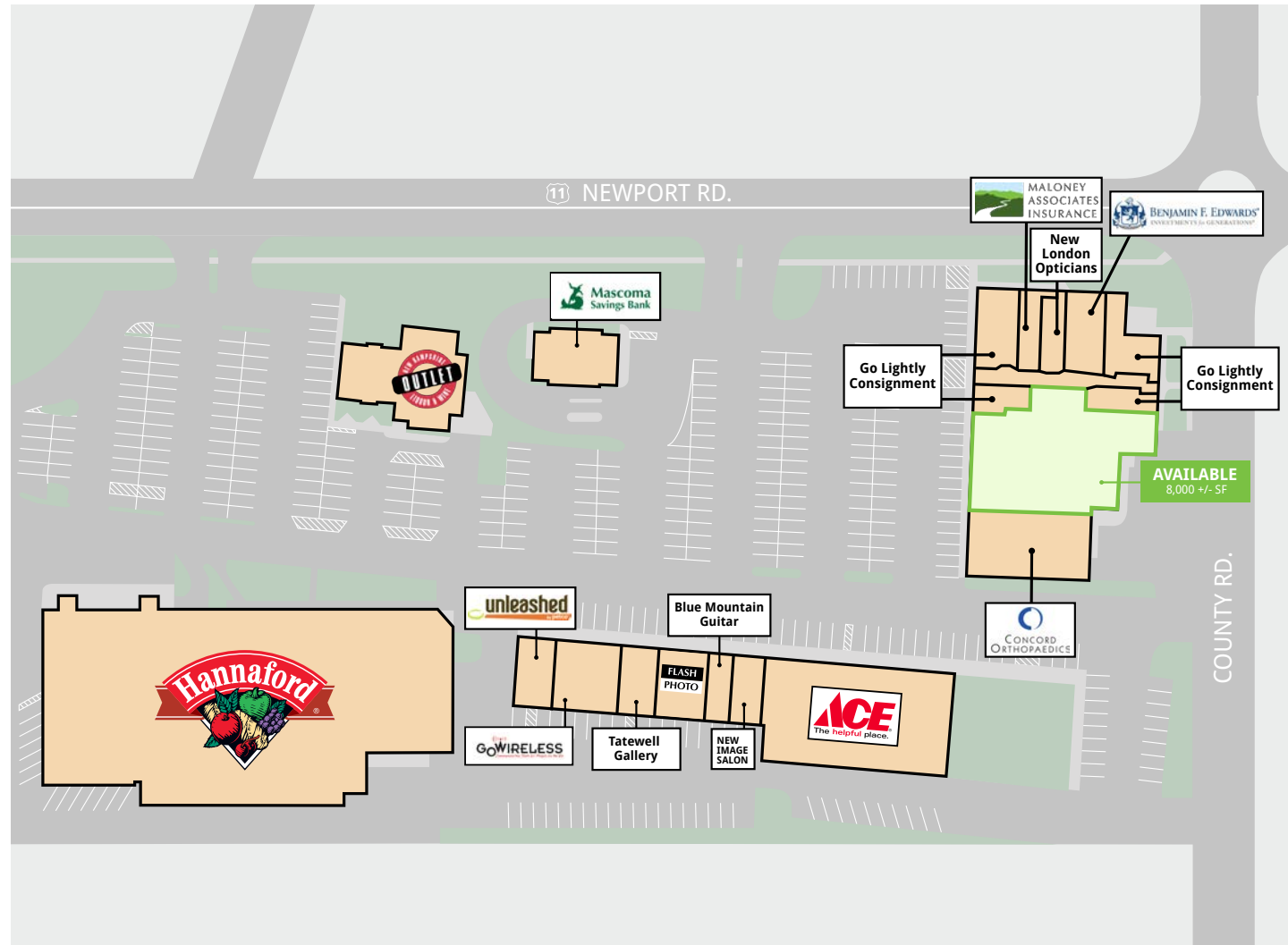
RETAIL

FOR LEASE

New London Shopping Center

295 NEWPORT ROAD, NEW LONDON, NEW HAMPSHIRE

RETAIL



8,000 +/- SF AVAILABLE

Located strategically at the intersection of Route 114 and Route 11 in New London, NH, the New London Shopping Center is the dominant shopping center serving the Lake Sunapee region. The Lake Sunapee region is home to Colby Sawyer College, Mt. Sunapee, Lake Sunapee, and The New London Hospital and continues to thrive as a 4 season community with some of the highest demographics of any town in New Hampshire. The property is anchored by a high volume Hannaford Supermarket, Clarke's Ace Hardware, Mascoma Savings Bank, and the NH Liquor and Wine Outlet.

FEATURES

- + **Asset Class:** Retail
- + **Total GLA:** 107,696 SF
- + **Details:**
 - 431 parking spaces
 - Traffic Count: 30,000 ADT

CONTACT US

PAUL CONNOLLY
 Director of Asset Management
 main: (508) 655-0505 • direct: (781) 916-8681 • fax: (781) 890-6600
 pconnolly@crosspointassociates.com

Crosspoint Associates, Inc. attempts to provide correct information, but does not warrant the accuracy and completeness of information, text, graphics, links or items on this brochure.

CROSSPOINT

Crosspoint Associates, Inc. 300 Third Ave. Suite 2, Waltham, MA 02451
www.crosspointassociates.com

CROSSPOINT

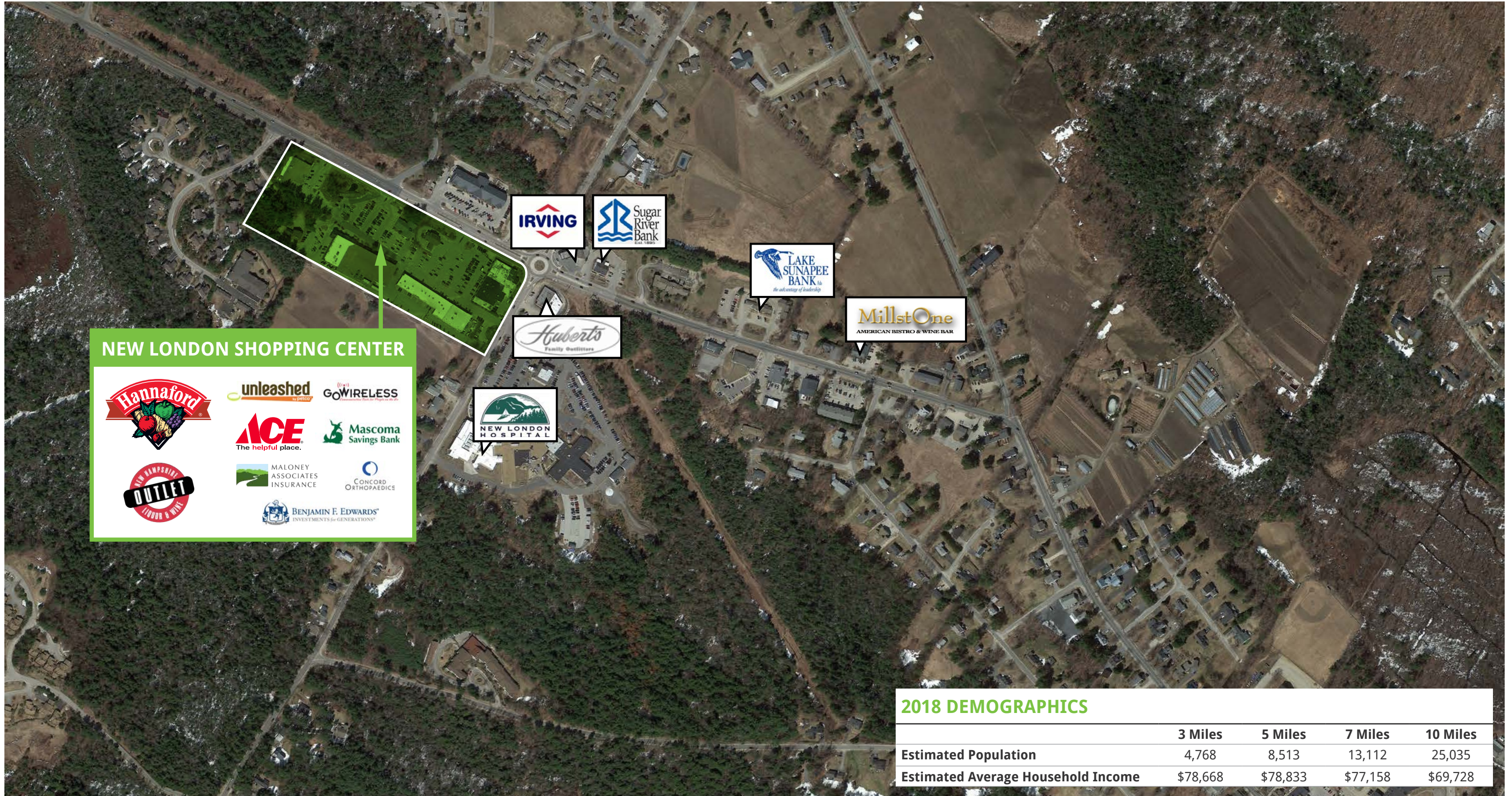
Crosspoint Associates, Inc. 300 Third Ave. Suite 2, Waltham, MA 02451
www.crosspointassociates.com

FOR LEASE

New London Shopping Center

295 NEWPORT ROAD, NEW LONDON, NEW HAMPSHIRE

RETAIL



NEW LONDON SHOPPING CENTER

2018 DEMOGRAPHICS

	3 Miles	5 Miles	7 Miles	10 Miles
Estimated Population	4,768	8,513	13,112	25,035
Estimated Average Household Income	\$78,668	\$78,833	\$77,158	\$69,728